

Multi-Dosage Weight Inspection Machine **MWI**



Qualicaps Co., Ltd.

321-5, Ikezawacho, Yamatokoriyama, Nara 639-1032, Japan
Phone : +81-743-57-8920 Fax : +81-743-56-5113

www.qualicaps.co.jp

Offers a wide-range of compatibility, accuracy and advanced processing capabilities. Contributes to higher quality product.

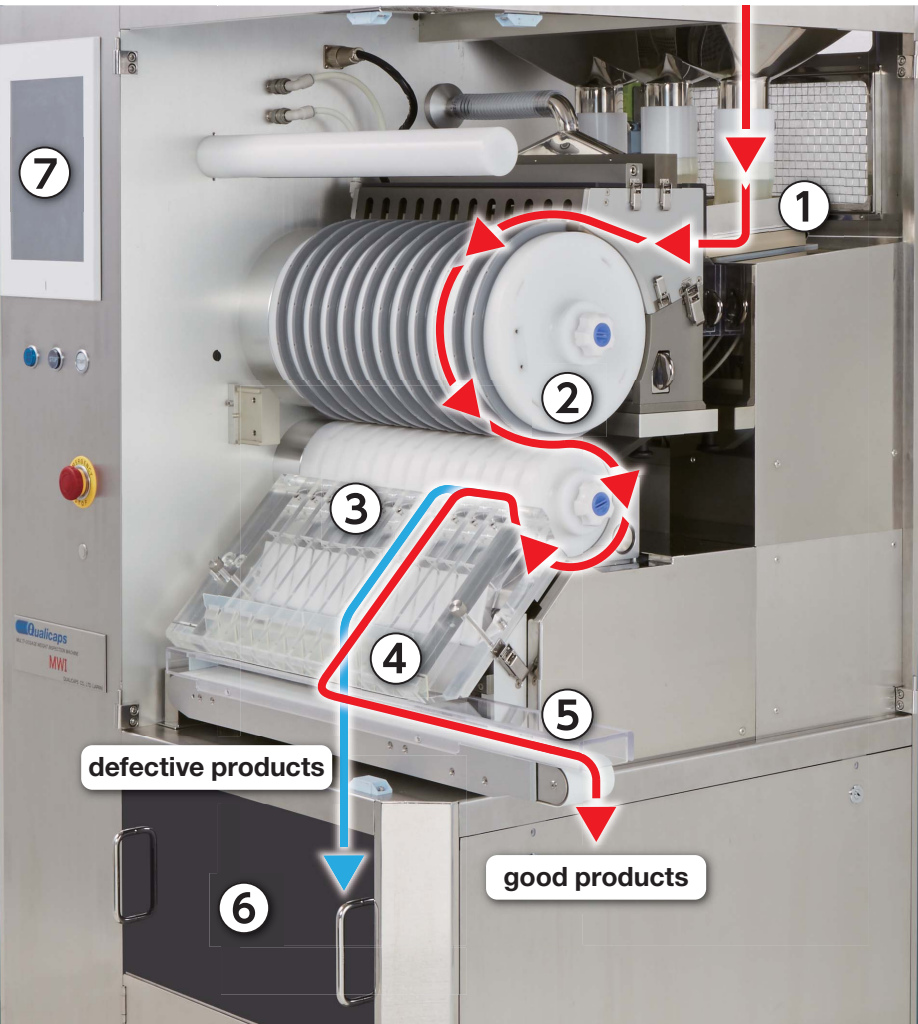
The pharmaceutical and health and nutrition industries demand accurate product weight with an easy manufacturing process. The Multi-Dosage Weight Inspection Machine has successfully achieved more common use of change parts by adopting the suction and transfer method.

MWI weighs tablets and capsules whose length are up to 22 mm, and guarantees $\pm 2\text{mg}$ weighing accuracy^{※1} and provides high processing speed, up to 100,000 units/hour^{※2}

※1 $\pm 3\text{mg}$ accuracy for measuring dosages of 501mg~2,000mg
※2 Processing speed varies per product shape and size



Patent Pending



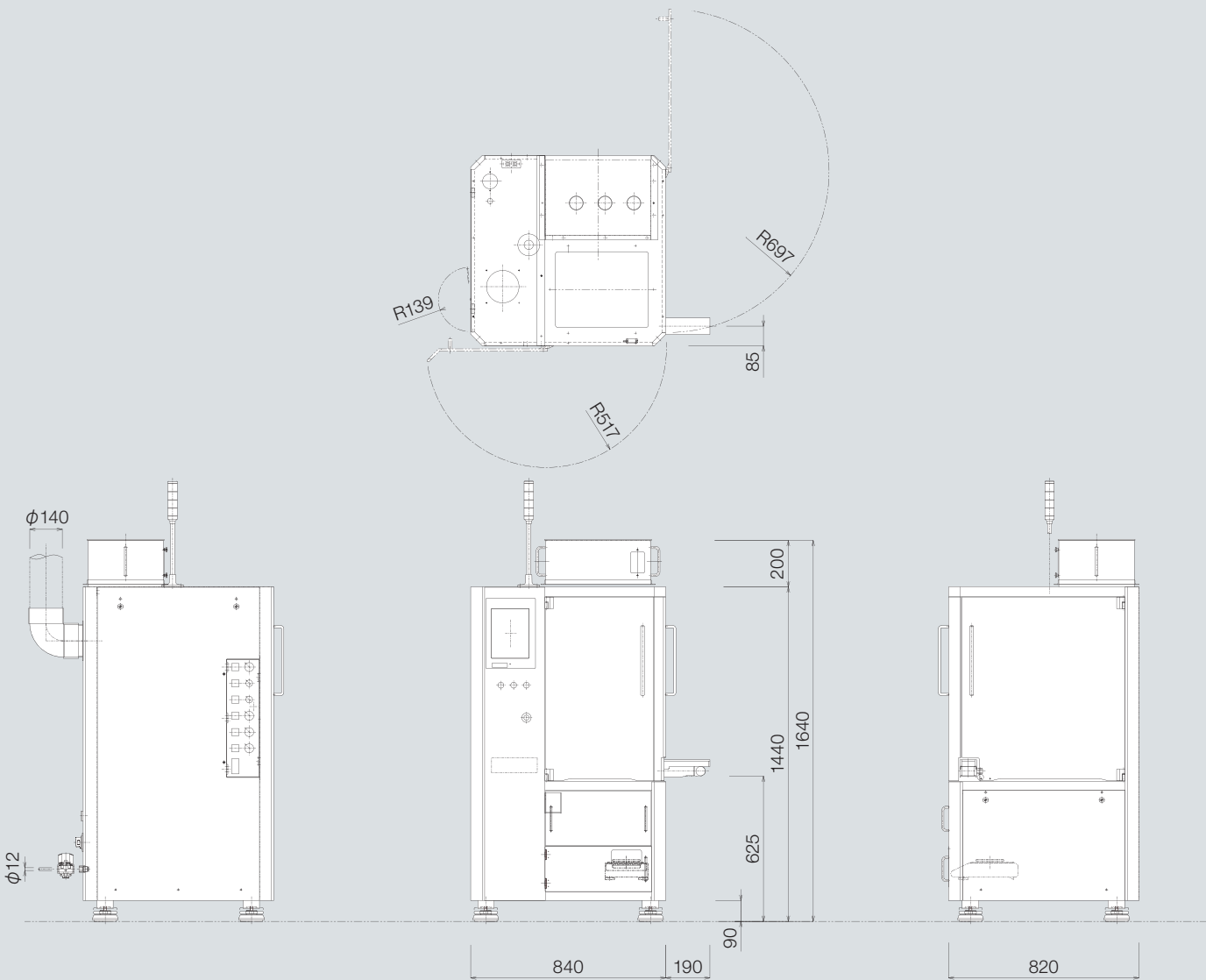
Multi-Dosage Weight Inspection Machine

MWI

Parts List

- ① Service hopper
- ② Suction drum/transfer roller
- ③ Weighing tray
- ④ Sorting chute
- ⑤ Good Product Conveyor belt
- ⑥ Defects box
- ⑦ Touch panel

Dimensions (unit : mm)



Specifications

Name	Multi-Dosage Weight Inspection Machine	Ext. dimensions	Width 820mm/Depth 840mm/Height 1,640mm (inc. hopper)
Model	MWI	Weight	Approx. 1,000kg
Weighing Accuracy	$\pm 2\text{mg}(3\sigma)$ ($\pm 3\text{mg}$ 501~2,000mg)	Electricity	Single-phase 200~240V 3KVA
Weighing Range	0~2,000mg	Vacuum (blower)	10kPa(2,000mmH ₂ O), 10m ³ /min(Max)
Processing speed	Max. 100,000 units/hour	Compressed air	0.5MPa(5kgf/cm ² G), 1,000L/min

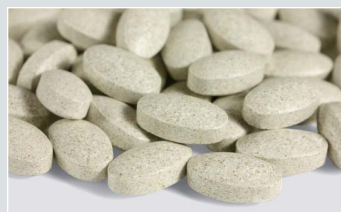
Adapted to weigh various shapes whose length is up to 22mm

Suction Drum

The suction drum sucks in and transfers the pharmaceutical product one at a time. The use of the suction and transfer method has reduced the need for multiple change parts.



Round tablets



Non round tablets



Hard capsules



Soft capsules

Tablets		Hard capsules	Soft capsules
Round tablets	Non round tablets		
		<p>Compatible with 0 size capsules</p>	



Balance

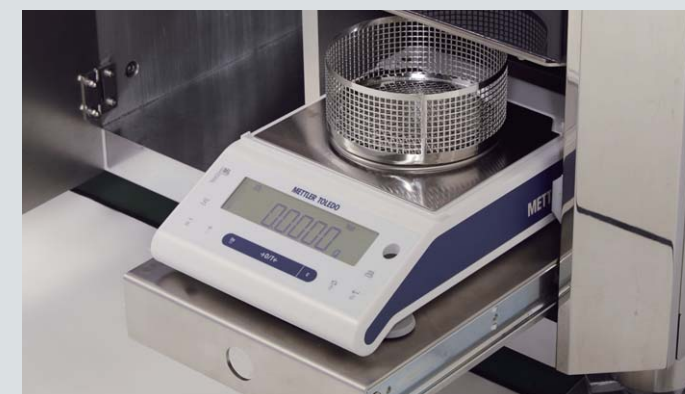
The balance is a maintenance-free and highly shock-resistant electromagnetic balance. The MWI guarantees $\pm 2\text{mg}$ measuring accuracy[※].

※ $\pm 2\text{mg}$ for 500mg or less. $\pm 3\text{mg}$ for 501mg~2,000mg



Good Product Conveyor Belt

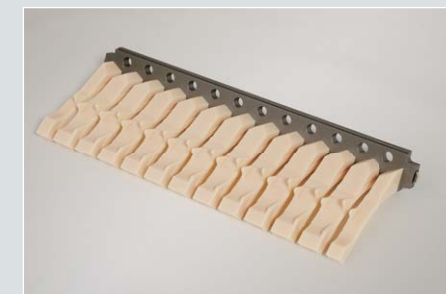
The good product conveyor belt reverses direction when the defect discharge confirmation system realizes that the product is not within the proper weight range which discharges the product and prevents it from being mixed with good products.



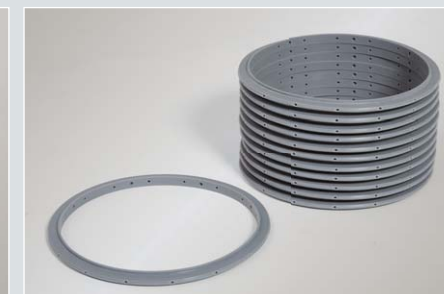
Measuring Accuracy Confirmation

In order to verify the internal electronic balance is functioning properly, the data of the weighed product is compared to the data measured by the internal electronic balance at a set interval.

Basic Exchange Parts



Service hopper guide



Suction rubber ring



Transfer roller