

# QUALICAPS<sup>®</sup> EQUIPMENT PRODUCT PORTFOLIO



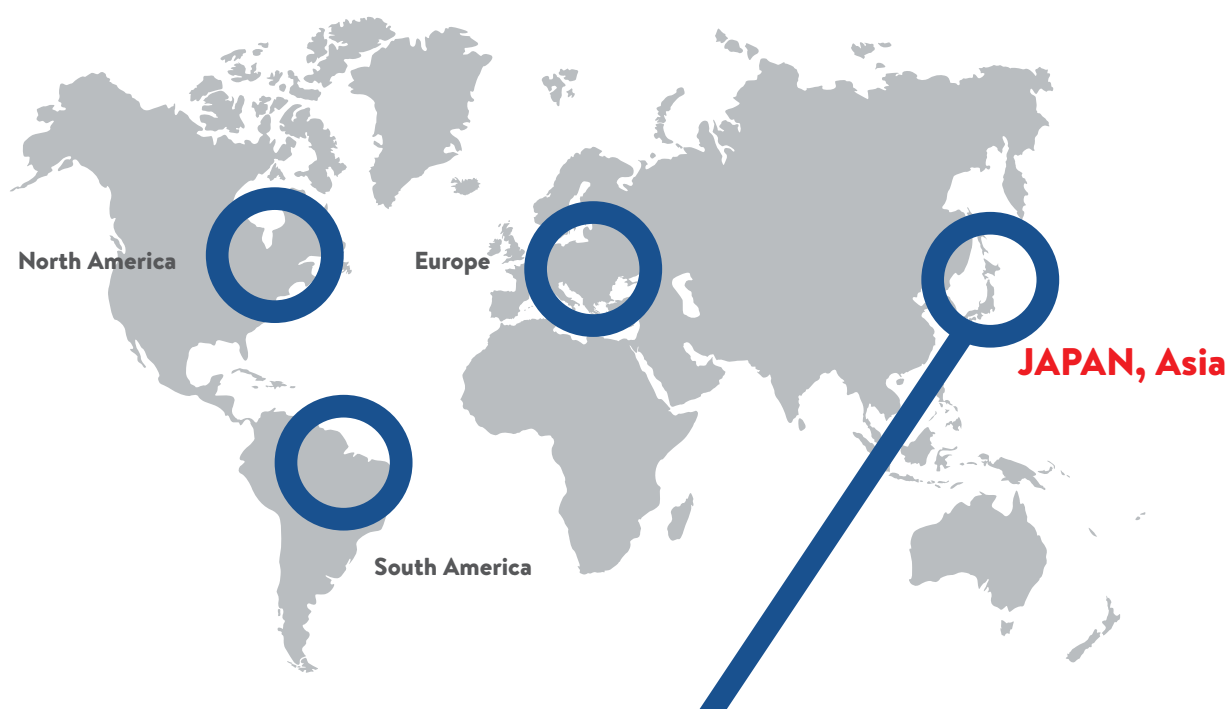
# **ENGINEERING EXCELLENCE**

**MAN AND MACHINE IN HARMONY**

At Qualicaps<sup>®</sup>, we do our part to contribute to health and wellness on a worldwide scale through the manufacture and supply of two-piece capsules and pharmaceutical processing equipment. To support the needs of solid oral dosage production form, we offer a proprietary product line of capsule filling and sealing, weight and visual inspection machinery, as well as imprinting machines. Our equipment is suitable for manufacturing on integrated production lines and the company can provide comprehensive solutions. All machines are specially designed to meet your unique production or research needs.

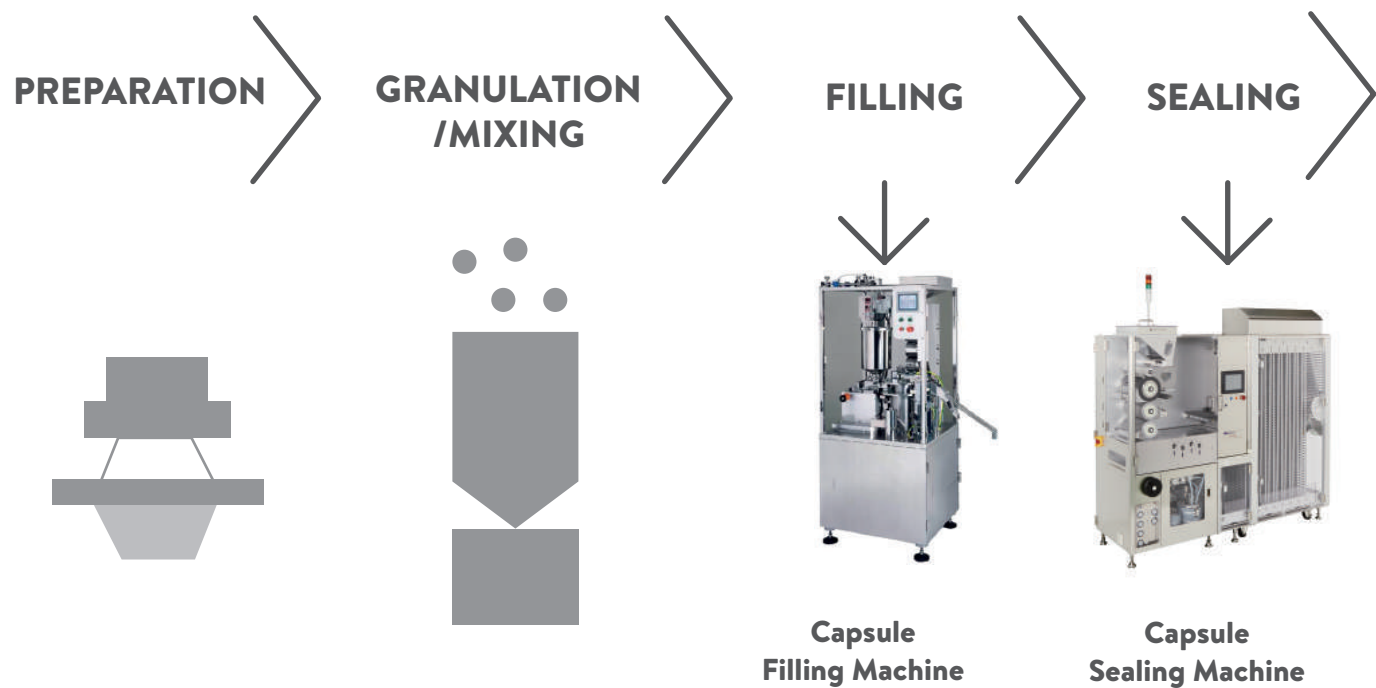
Our research and development team is always innovating and developing faster, more reliable machinery to meet emerging needs in the pharmaceutical and health & nutritional markets. Qualicaps<sup>®</sup> equipment incorporates the best technology to help you successfully and easily manufacture your product.

## QUALICAPS GROUP

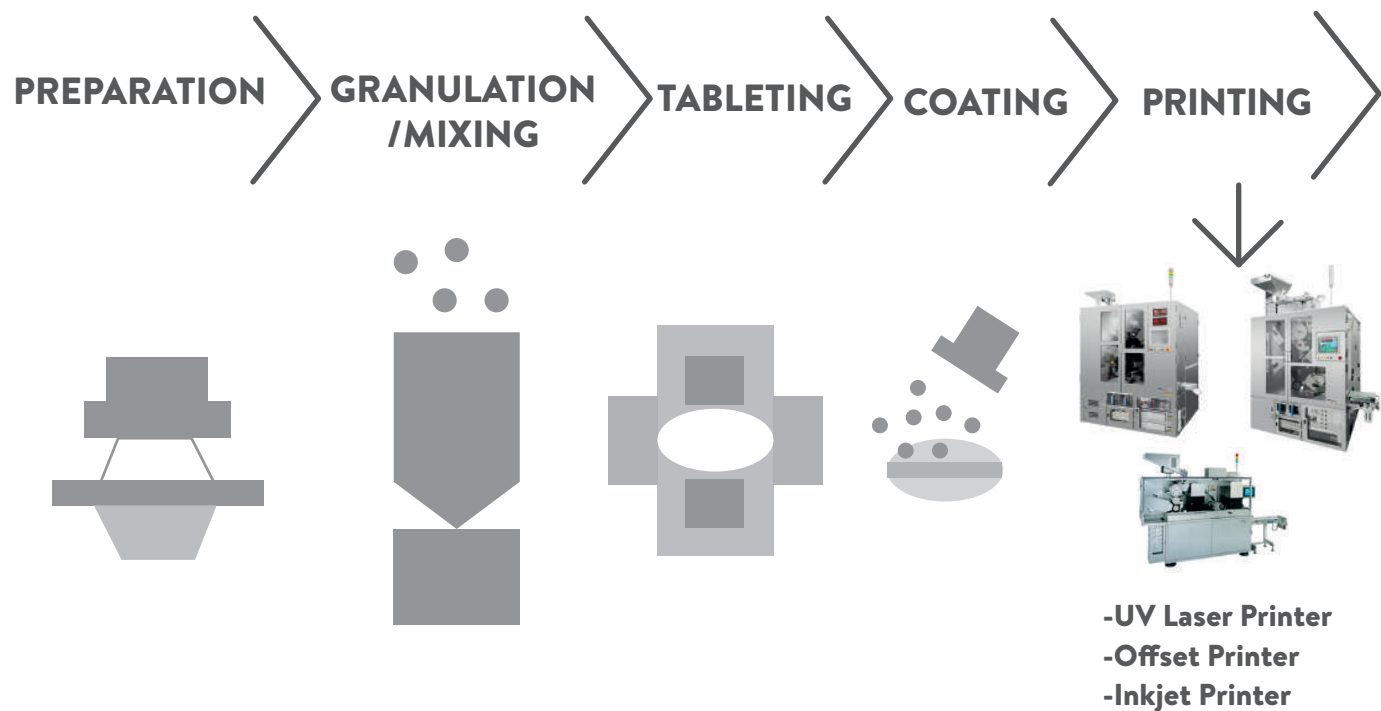


# QUALICAPS®EQUIPMENT SUPPORTING PRODUCTION LINES

## FOR CAPSULE



## FOR TABLET

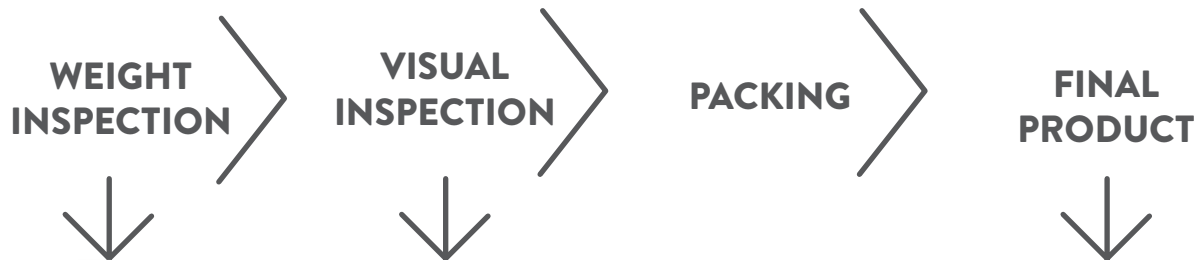




**Capsule Weight Inspection Machine**



**Capsule Visual Inspection Machine**



**Multi Dosage Weight Inspection Machine**



**Tablet Visual Inspection Machine**



# CAPSULE FILLING MACHINE

Infuse capsule manufacturing craftsmanship  
into the machine  
No.1 Sales in JAPAN



**JCF**



**F-LABO**



**F-40**



**FUNFIL**

- Using know-how in capsule manufacturing technology that we have cultivated over years
- Full automatic machine that fills hard capsules with powder, granules, tablets or liquid, etc.
- With a controlled rotational speed of the body disk, liquids are able to be filled with stability in capsules
- JCF fills using an auger method, which is especially good for products that cannot be filled by compression or vibration. It is well suited for health and nutritional products.

# CAPSULE SEALING MACHINE

Infuse capsule manufacturing  
craftmanship into the machine



**HICAPSEAL 15**

Pilot scale



**HICAPSEAL 125**

Production scale

- Perfect sealing by means of unique positioning method and by double sealing technique.
- Guarantee of tamper evidence for products.

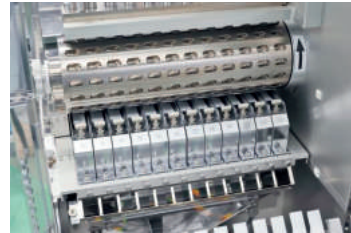


# CAPSULE WEIGHT INSPECTION MACHINE

Infuse capsule manufacturing craftsmanship into the machine



**CWI-60/125**



- Fewer change parts are needed and no tools necessary for changeover.
- The weighing data of the product is compared to the data measured by the internal electronic balance a set interval to verify the correct function of the balance.

# MULTI DOSAGE WEIGHT INSPECTION MACHINE



**MWI**



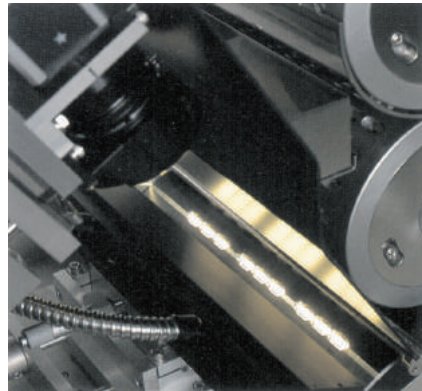
- Weight inspection of hard/soft capsules and tablets of various shapes and sizes
- Fewer change parts are needed, which reduces time and costs

# CAPSULE VISUAL INSPECTION MACHINE



**CES-50/100/150**

**Infuse capsule manufacturing craftsmanship into the machine**



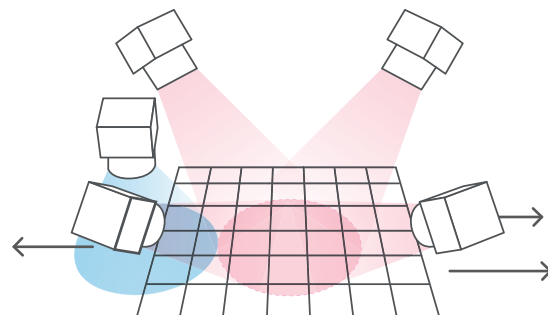
Capsule rotates on the inspection drum, machine can inspect the capsule all around. There should be no DEAD POINTS for inspection.

# TABLET VISUAL INSPECTION MACHINE



**VIM+T**

Enables the visual inspection of tablets from four directions without any dead angles for a new level of quality and safety.





# UV LASER PRINTER

Marks the surface of solid preparations with a UV Laser. This doesn't cause thermal denaturation, and also solves ink stain and letter shortage problems created by ink marking



Counterfeiting

**No.1 Sales in JAPAN**

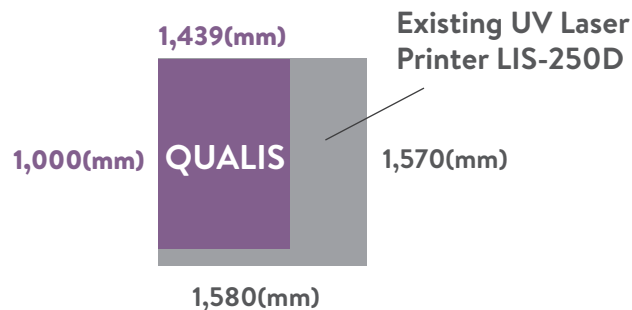
**Measure against fake medicine**



LIS-250D

# LASER PRINTER

- Single surface printing by UV laser
- Compact size
- Fewer change parts
- 21CFR Part 11 Compliance



**One of the highest speed UV laser printer**



QUALIS-US

# TABLET PRINTER



**IS-500**



**QI-300**

To provide high run-ability by unique handling scheme.  
High-quality offset printing because of stable position for printing.

# TABLET INKJET PRINTER

Stably supplies and transports tablets of all shapes and materials by drum transportation.  
The IMS-300D uses an independently developed inkjet system to enable the high-resolution marking of characters and symbols.



**IMS-300D**

# ALL EQUIPMENT IS MADE IN JAPAN

<b>Fully Automatic Capsule Filling Machine</b>	F-Labo	1,000-2,600	capsules/hour
	F-5	500-5,000	capsules/hour
	F-40	40,000	capsules/hour
	F-80	80,000	capsules/hour
	F-100	100,000	capsules/hour
	F-150	150,000	capsules/hour
	JCF-40	40,000	capsules/hour
	FUNFIL	40,000	capsules/hour
<b>Capsule Sealing Machine</b>	HICAPSEAL 15	15,000	capsules/hour
	HICAPSEAL 125	125,000	capsules/hour
<b>Capsule Weight Inspection Machine</b>	CWI-60	60,000	capsules/hour
	CWI-125	125,000	capsules/hour
<b>Multi Dosage Weight Inspection Machine</b>	MWI	up to 100,000	pcs/hour
<b>Capsule Visual Inspection Machine</b>	CES-50	up to 50,000	capsules/hour
	CES-100	up to 100,000	capsules/hour
	CES-150	up tp 150,000	capsules/hour
<b>Tablet Visual Inspection Machine</b>	VIM+T	250,000	tablets/hour
<b>Tablet Printer</b>	QI-300	300,000	tablets/hour
<b>Tablet Printer with inspection function</b>	IS-500	500,000	tablets/hour
<b>UV Laser Printer</b>	LIS-250D	250,000	tablets/hour
<b>Laser Printer</b>	QUALIS-US	up to 400,000	tablets/hour
<b>Tablet Inkjet Printer</b>	IMS-300D	300,000	tablets/hour

**QUALICAPS CO.,LTD.**

321-5, Ikezawacho, Yamatokoriyamashi,

Nara 639-1032 Japan

Tel:81-743-57-8920

Fax:81-743-56-5113

[www.qualicaps.com](http://www.qualicaps.com)

