

CAPSULE WEIGHT INSPECTION MACHINE



CWI

CAPSULE WEIGHT INSPECTION MACHINE

CWI

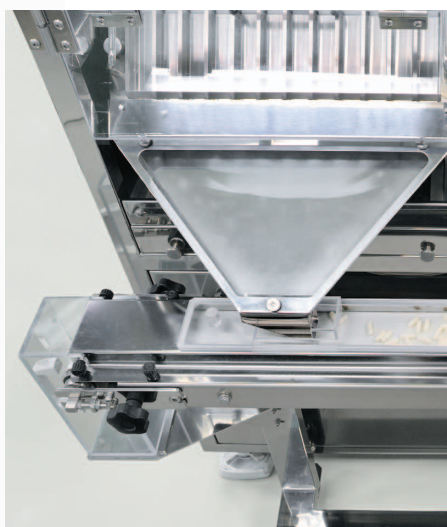
Features and

Specification



Weight checking by electromagnetic force balance

Our improved maintenance-free electromagnetic force balance realizes $\pm 2\text{mg}$ measuring accuracy



Prevention of unexpected discharge setting up a belt conveyer

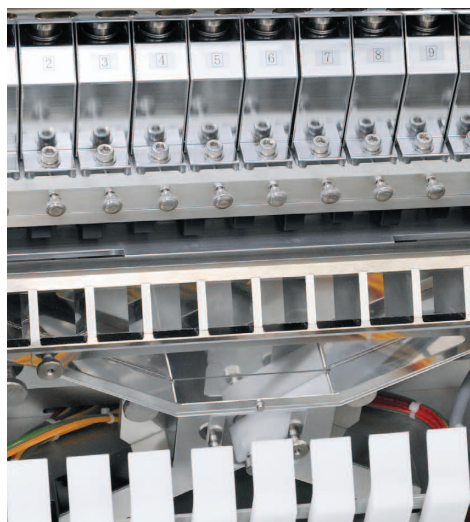
In case of malfunction of discharge f...
defectives from being collected in

- Benefits**
- 100% weight inspection by high speed and accurate processing
 - Standardized defective capsules discharge check system
 - Automatic verification of an electromagnetic force balance is available
 - Automatic zero adjustment

Operation Panel Displays:

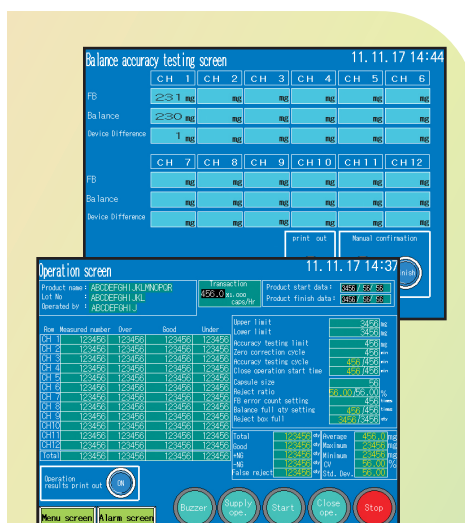
- Weight of each capsule by row
- Trend of max, min, and average value
- Number of products by row and in total

Model	Production Capacity	Dimension (W) × (D) × (H)	Weight	Row Numbers
CWI-60	60,000 Capsules/hour	825mm × 614mm × 1,987mm	490 kg	6 rows
CWI-125	125,000 Capsules/hour	825mm × 614mm × 1,987mm	510 kg	12 rows
CWI-250	250,000 Capsules/hour	1,374mm × 614 mm × 1,987mm	1,000kg	12 rows × 2



**Defective capsules rejection system
/Defective system discharge check device**

Assure exact rejection and perfect discharge of defective capsules out of a line.



Operation Panel

Display the information required for high accurate controlling such as number of processing products and average weight trend.



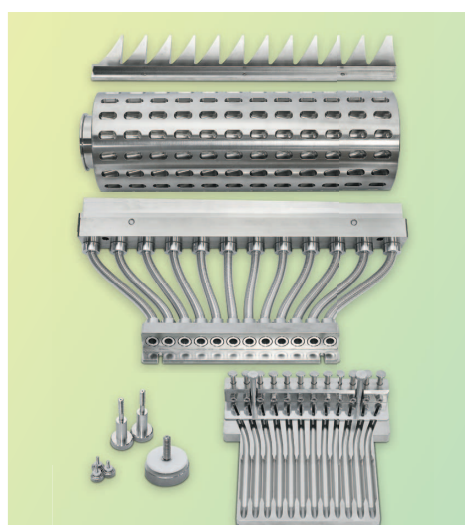
Large of defective capsules by

lap, the belt rotates reversely and prevents non-defective capsules. (Optional extra)



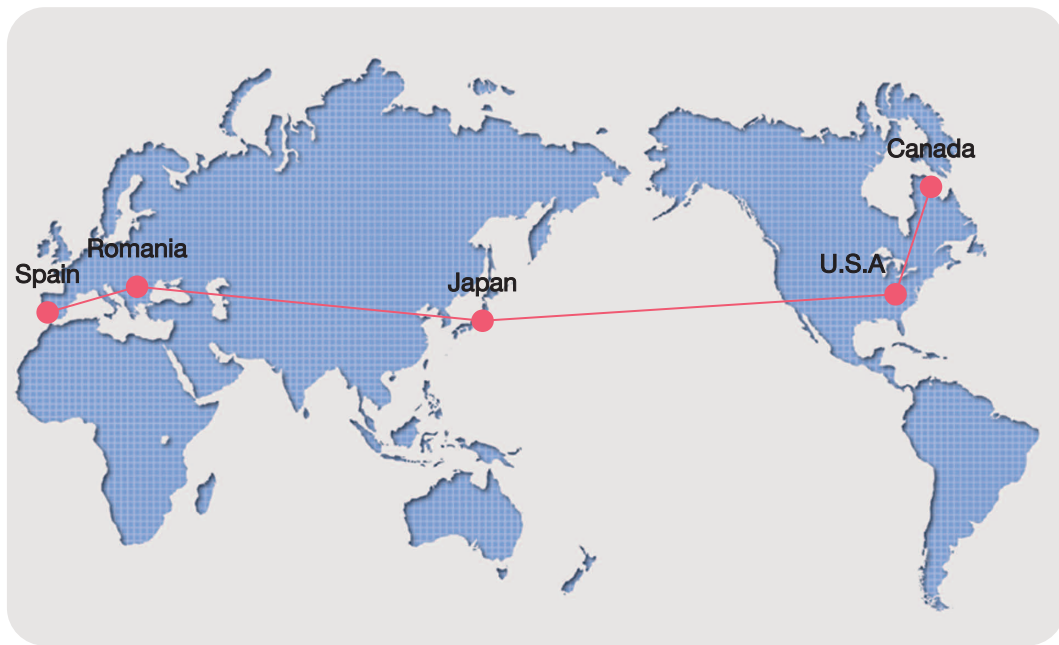
Balance built in the machine

Provide frequent compare check of electromagnetic force compensation balance by electronic balance.



**No tool necessary
to set change parts**

This allows a short time installation of change parts.



GLOBAL NETWORK

Qualicaps Co., Ltd.

321-5 Ikezawacho, Yamatokoriyama
Nara, 639-1032
Japan
Phone: 81-743-57-8920
FAX : 81-743-56-5113
www.qualicaps.co.jp/en

Capsules • Equipment • Technology